

# 2045 Transportation Plan



## What is the 2045 Transportation Plan

The Lee County Metropolitan Planning Organization (MPO) is a federally mandated and funded transportation policy-making organization that is comprised of representatives from local government and transportation providers. Federal funding for transportation projects and programs is administered through the MPO. One of the major activities that the MPO completes to program federal funds is the Long Range Transportation Plan, or LRTP.

The 2045 LRTP or Transportation Plan is the next step in the evolution of long-range transportation planning for Lee County. Updated every 5 years, the Transportation Plan incorporates the latest guidance from the federal and state level to meet the ever-changing needs of Lee County. There are 2 major steps in developing the Transportation Plan: the identification of needs; and the creation of a cost feasible plan. The identification of needs considers projected growth and how it may affect the transportation system, as well as the community's desires for the future. The cost affordable plan identifies the needs that can be funded with available transportation revenues. The LRTP includes highways, transit, bicycle and pedestrian means of travel.

## How can you get involved?

### Public Workshops:

The MPO will hold Public Workshops during development of the Needs and Cost Feasible. The Needs Workshop has been delayed in response to the COVID-19 outbreak and will be reformatted to an online format for virtual participation by the public. Additional updates will be announced on the MPO's website.

The Cost Feasible Workshop is scheduled to be held in August.

### Online Survey:

An online survey will be available in May and June asking for input on topics related to transportation needs and priorities

### MPO Website:

Stay informed on updates to the Transportation Plan by visiting the MPO website listed below and opportunities to provide input on development of the plan.





## 2045 LRTP Goals

Guiding the development of the 2045 Transportation Plan, are the following eight goal statements adopted by the Lee County MPO.



GOAL 1: Enhance the **safety and security** of the transportation system for both motorized and non-motorized users.



GOAL 2: A transportation system that offers meaningful **transportation choices** for existing and future residents, visitors and businesses.



GOAL 3: A transportation system that is **financially feasible** and uses the best available technology to improve the efficiency of the system.



GOAL 4: A transportation system that is sensitive to the community's **health**, the community **character** and the changing **environment**.



GOAL 5: A sustainable transportation system that supports the **economic competitiveness** of the region.



GOAL 6: A transportation system that manages congestion, enhances **connectivity between modes** and improves the resiliency and reliability of the system



GOAL 7: A transportation system that is **coordinated** through local, regional and state agencies and encourages quality growth and sustainable land development practices.



GOAL 8: A transportation system that supports the development and implementation of **Autonomous, Connected and Mobility on Demand** options for our residents and visitors.



Between 2010 and 2018, the number of permits for new home construction grew by an average of 32% per year.



South West Florida International Airport was the 47<sup>th</sup> busiest airport in the Country in 2018 transporting more than 9 million passengers and 16,000 tons of cargo



Permanent Household Population



Number of Jobs



Number of Dwelling Units

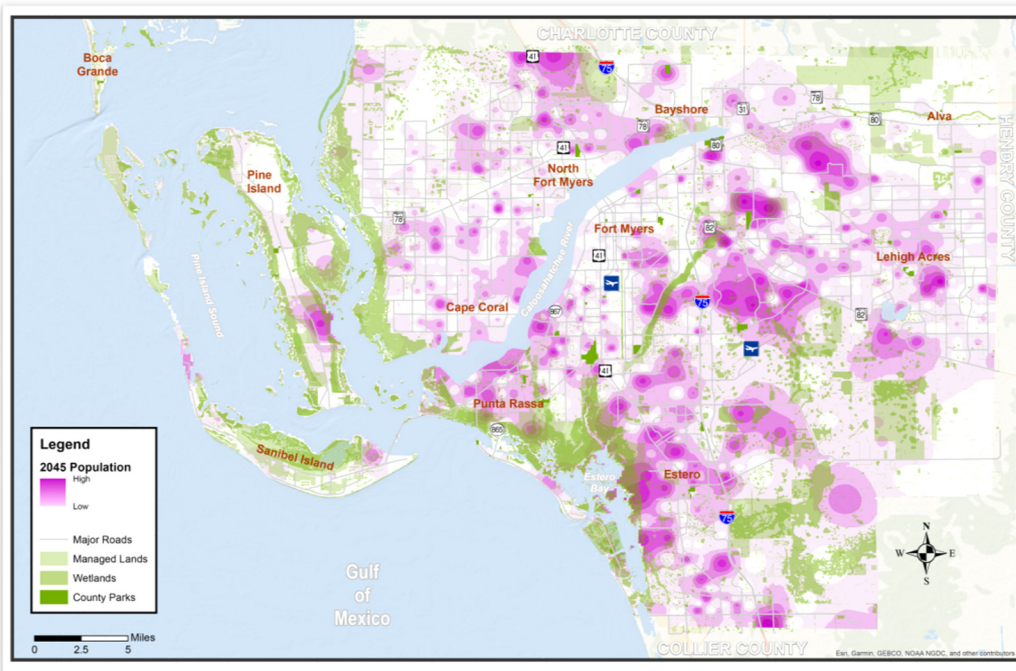


Ratio of Jobs to Population





## 2045 Population



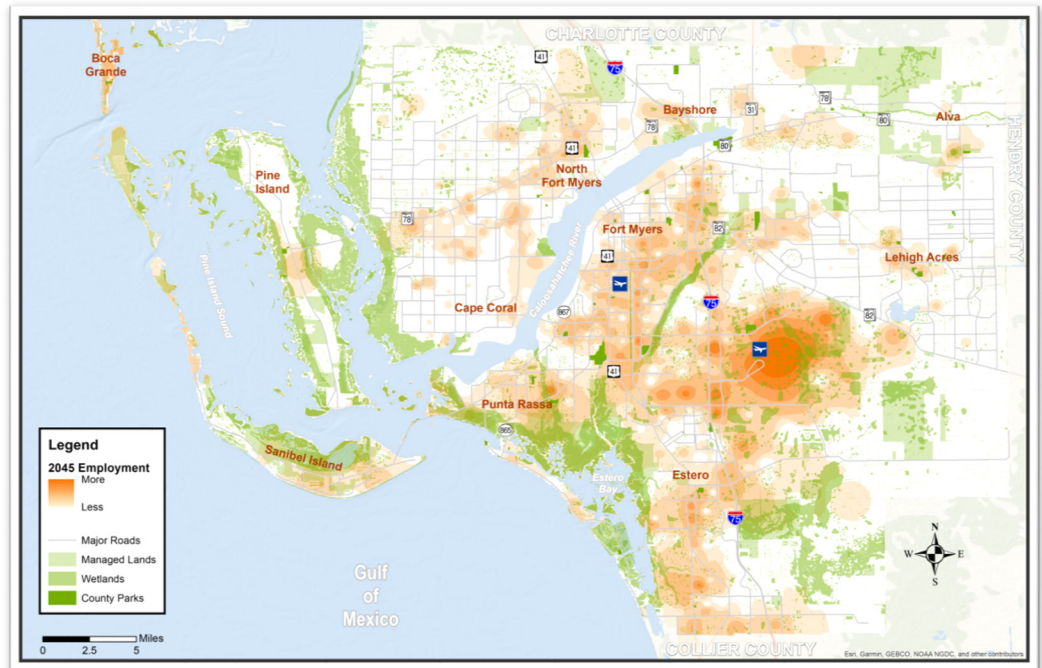
## 2045 Population

Population growth is anticipated around existing population centers and along major transportation corridors.

## 2045 Employment

Growth in jobs is expected to occur around the Southwest Florida Regional Airport and in existing job centers

## 2045 Employment



### 2015

663,621

374,258

259,569

0.39

### 2045

1,155,012

548,543

435,910

0.38

## 2045 Transportation Plan



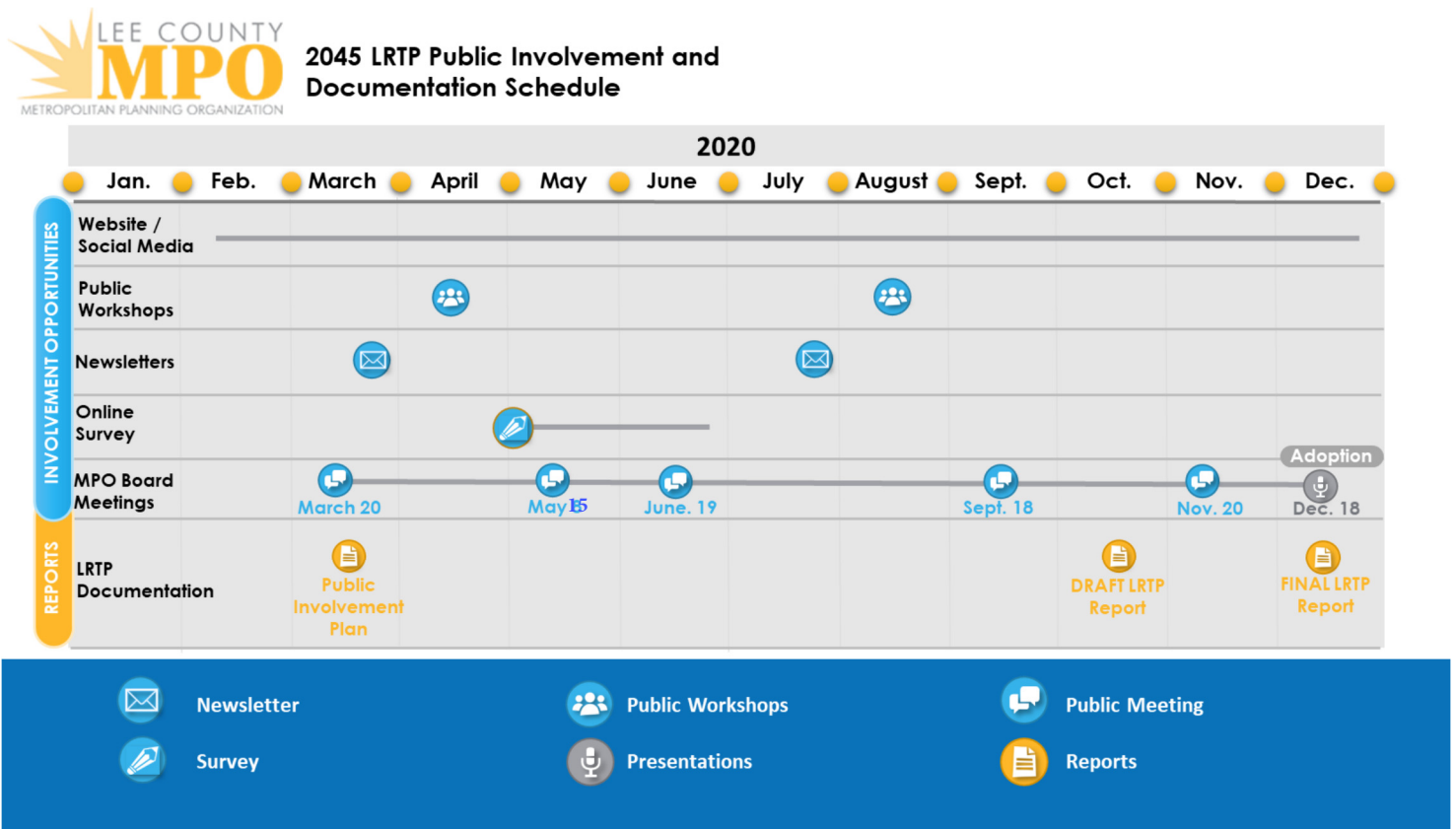


## Lee County MPO Board

The Lee County MPO Board has 18 members, including all five county commissioners, elected officials representing each incorporated area (city, town, or village), plus the Florida Department of Transportation District 1 Secretary as a non-voting advisor.

## How long will it take to develop the Transportation Plan?

The Transportation Plan includes a comprehensive technical analysis of the current transportation system, projections of population and employment growth to the year 2045, the development of goals and objectives for the plan, development of a Needs Plan, and creation of the Cost Affordable LRTP. The final version of the LRTP must be adopted by December 18, 2020 and the schedule below was designed to provide ample opportunities for the public to be involved.



## 2045 Transportation Plan



The preparation of this newsletter has been financed in part through grants from the FHWA, FTA, and U.S. DOT, under the Metropolitan Planning Program, 23 USC Sections 134 & 135.